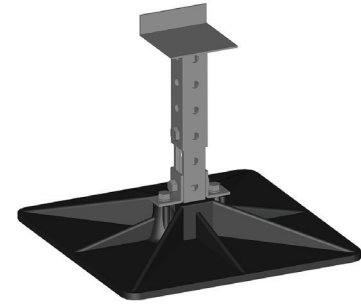




RTU-20 CENTER

SPECIFICATION & TECHNICAL INFORMATION SHEET



DESCRIPTION:

The RTU-20 Center is designed to support air handlers, blowers and exhaust fans. The support is designed for installation without roof penetrations, flashings, or damage to the roofing material. The support can be used on virtually any roofing system from flat roofs to roofs sloped up to 2 in 12. The supports should be spaced according to the specifications. Seismic and High-Wind applications are available for the system.

INSTALLATION PROCEDURE:

New Equipment

- 1 | Layout isolation pads, (provided by contractor), according to the design and layout.
- 2 | Level and square supports before any weight is applied.
- 3 | Place equipment onto supports.
- 4 | Fine tune supports until unit is level.
- 5 | Attach all-thread or bracing to RTU-20 supports to hold all support units in place.

Retro-fit

- 1 | Lift Equipment (enough to remove existing support).
- 2 | Clean area where new support is to be placed.
- 3 | Place ISO pad, (provided by contractor).
- 4 | Put RTU-20 support on pad.
- 5 | Level and square support before any weight is applied.
- 6 | Place equipment onto support
- 7 | Fine tune supports until unit is level.
- 8 | Attach all-thread or bracing to RTU-20 support to hold all support units in place.

STORAGE:

Store in the original, unopened containers, under cover, until needed for installation.

LEED INFORMATION:

Frame/Steel
Post Consumer Recycled Content: 0%
Post Industrial Recycled Content: 25%

BASE MATERIAL:

Post Consumer Recycled Content: 80%
Post Industrial Recycled Content: 20%
Manufacturing Location: Houston, TX

PRODUCT DATA:

Property:

Base:

Size:

Base Weight:

Base Material:

Base Color:

Base Density:

Minimum Performance:

18" x 18" x 3" or 18" round
7 lbs and 10-1/2 lbs

Injection molded high density/high impact polypropylene with UV-inhibitors and Antioxidants
Black

55.8 lb/cu ft (894 kg/cu m)

Carbon Steel Framing:

Carbon Steel Finish: Hot dip galvanized per ASTM A 123

Hardware:

Nuts and Washers: Hot Dip Galvanized or 304 Stainless Steel