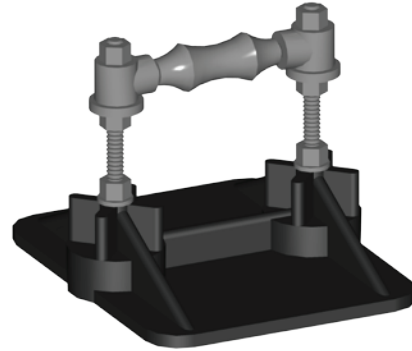




SS8-R

SPECIFICATION & TECHNICAL INFORMATION SHEET



DESCRIPTION:

The SS8 with Roller is designed to support gas lines up to 2-1/2" OD, not exceeding 10" in height. The support is designed for installation without roof penetrations, flashings, or damage to the roofing material. The support can be used on virtually any roofing system from flat roofs to roofs sloped up to 2 in 12. The supports should be spaced according to the specifications. Seismic and High-Wind applications are available for the system.

INSTALLATION PROCEDURE:

New Pipe

- 1 | Layout isolation pads, (provided by contractor), according to the design and layout.
- 2 | Layout SS8-R supports per spacing specifications or PHP layout.
- 3 | Run pipe on roller.
- 4 | Adjust roller height so weight of system is evenly distributed.

Retro-fit

- 1 | Lift pipe, (enough to remove existing support).
- 2 | Clean area where new support is to be placed.
- 3 | Place ISO pad, (provided by contractor).
- 4 | Place SS8-R support on pad.
- 5 | Lower pipe onto roller.
- 6 | Adjust roller height so weight of system is evenly distributed.

STORAGE:

Store in the original, unopened containers, under cover, until needed for installation.

LEED INFORMATION:

Frame/Steel
Post Consumer Recycled Content: 0%
Post Industrial Recycled Content: 25%

BASE MATERIAL:

Post Consumer Recycled Content: 80%
Post Industrial Recycled Content: 20%
Manufacturing Location: Houston, TX

PRODUCT DATA:

Property:	Minimum Performance:
Base:	
Size:	8" x 10" x 2-1/2"
Base Weight:	3 lbs
Base Material:	Injection molded high density/high impact polypropylene with UV-inhibitors and Antioxidants
Base Color:	Black
Base Density:	55.8 lb/cu ft (894 kg/cu m)

Rod Type:

Diameter:	1/2"
Length:	10"
Finish:	Hot Dip Galvanized or 304 Stainless Steel

Carbon Steel Roller:

Roller Type:	3" cast iron roller with Malleable sockets
--------------	--

Carbon Steel Finish: Hot Dip Galvanized per ASTM A 123

Hardware:

Nuts and Washers:	Hot Dip Galvanized or 304 Stainless Steel
-------------------	---